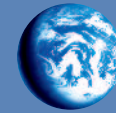


Fair wear and tear standards

for **MEDIUM** use

This document detailing **Medium Use** Fair Wear and Tear Requirements has been put together not only to ensure that the equipment supplied returns in an acceptable condition but to make the customer aware of the potential costs that could be incurred or avoided at the end of a contract hire period if the equipment is not looked after correctly.

This list is not exhaustive, but is a general guide to help prevent any misunderstanding of the expected return condition of our equipment and can be used to educate drivers to prevent unexpected out of contract costs.



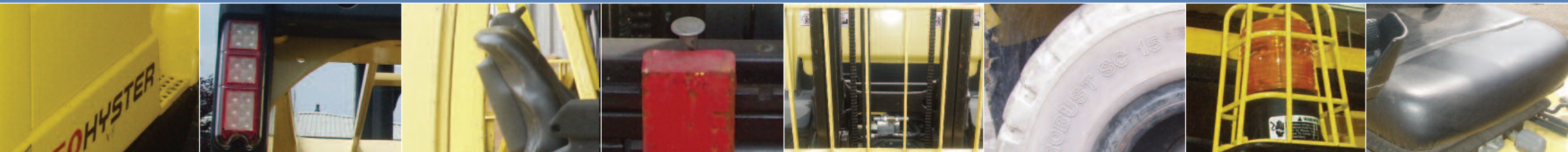
Barloworld
Handling



Lift trucks and materials handling equipment

Fair wear and tear standards

for **MEDIUM** use



Barloworld
Handling



Head Office

Barloworld Handling Limited

Maidenhead Office Park, Maidenhead, Berkshire SL6 3QN

Telephone: 01628 822151 Facsimile: 01628 826866

info@handling.barloworld.co.uk

www.barloworld.co.uk

for **contract hire** and
leased equipment



Contents

- 2 Introduction
- 3 General Guidelines
- 4 Upright
- 4 Channels and Associated Components
- 4 Hydraulics
- 5 Frame and Chassis
- 6 Wheels and Tyres
- 6 Axles
- 6 Fuel
- 6 Cooling
- 7 Electrical and Lights
- 7 Additional Equipment
- 8 Summary



Fair wear and tear standards

The aim of this guide

Your Application has been determined as Medium with Standard usage and non corrosive.

This guide details the required return condition of forklift trucks and other materials handling equipment after a period of Rental, Lease or Contract Hire in this type of application. Some Agreements may have specific conditions / arrangements detailed in the contract that must be met in addition to these requirements. However, as a general rule and as an industry standard, most agreements will state in the contract that returned equipment must be legally compliant, complete to the specification as supplied, and in good working order and repair as at the commencement date of the contract, (fair wear and tear excepted), as detailed in 13.3 of the enclosed sample contract.

This document provides guidance as to what constitutes "Fair Wear and Tear."

"Fair Wear and Tear" is the expected deterioration when the equipment is used in accordance with accepted codes of practice and guidance given by the manufacturer. This should not be confused with Damage, Misuse or Abuse.

Damage occurs as a result of a specific event or series of events, such as Impact, Poor Load Handling Techniques, Poor Site Conditions i.e. potholes, uneven ground etc, overloading, or failure to carry out mandatory pre-use checks.

A Barloworld representative and yourself have determined that your application is to be classified as Medium and the expected return condition of the equipment to be Above Average.

Regular Maintenance, Operator Training, Supervision and Fleet Management best practices, will help prevent Damage, Misuse or Abuse from occurring.

A robust maintenance regime will include equipment inspections, carried out in accordance with the manufacturer's recommended service intervals, thorough examinations, pre-use checks and scheduled repairs. These are Legal Requirements that ensure the equipment is safe to use. They are also critical in making sure that excessive wear and tear is minimised and all damage is repaired promptly.

In addition a good maintenance regime will firstly, achieve lower operating costs and secondly, reduce the likelihood of incurring charges on the equipment's return.

Important requirements about returning your equipment

■ Mechanical

The Forklift truck / Equipment shall be returned in a safe, and reliable mechanical condition, capable of passing the relevant Thorough Examination under the provisions of regulation 9 of LOLER, or Inspection under the provisions of regulation 6 of PUWER.

■ Uprights, Engine, Transmission and Driveline Components such as

Clutch (if applicable), Gearbox, Differential, Pumps, Mast Channels, Carriage, must be in good running order and free from any operational defects.

■ Oils and Coolants

All components must be free of Oil, Fuel or Coolant Leaks, all fluids must be above minimum level mark and free from contamination.

■ Starter Batteries

Batteries must be suitable for the equipment and capable of starting the engine from cold, and the cell electrolyte must be above the minimum level.

■ Traction Batteries

Batteries must be capable of powering the equipment, cell electrolyte level must be above the minimum level. Cell tops should have no more than minor lift, cables and plugs should be secure and free from damage and there should be no corrosion of cell links or the battery tank.

■ Electrical Equipment

All electrical components must be present and functional. If replacements have been fitted, due to damage or theft, they must be of a directly equivalent specification. All light lenses must be free of cracks or damage.

■ Tyres

Tyre wear must not be excessive and allow the tyre tread to be cut, (approx. 30mm above wear band), if appropriate. They must be free from cuts and gouges.

■ Cab and Mirrors

All glass / mirrors must be free of cracks, chips and any other damage.

■ Seat / Floor Mats

Seats and Floor Mats must be complete with no rips, tears, gouges and the seat must be fully operational.

■ Frame / Chassis

Frame, panels, hood, paintwork must be free of impact damage, writing / graffiti / labels. Minor scrapes / scratches are acceptable. It is accepted that due to site conditions and exposure to the elements that paint work may fade over the period of the hire / lease and that upon return it will require a steam clean. Any non Barloworld supplied enhancements, i.e weather protection, pen holders, radios etc, must be removed and the equipment returned to its original standard before collection.

■ Additional Equipment

Chargers, fork extensions, jibs, etc, must be in good condition, complete and fully functional.

UPRIGHT

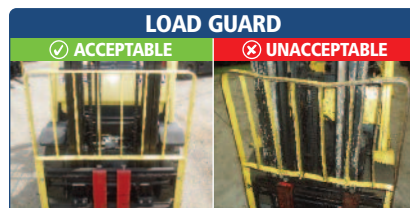
Item	Required Standard
Forks	Forks must not be distorted. Tip heights must be within 25mm of each other.
Fork Heels	Fork heels must not be worn in excess of 7%.
Fork Latches	Fork latches must be present and operational.
Load Guard	Load guard must be present, not distorted, no cracked welds or missing bars. Minor scrapes / scratches to paintwork are acceptable.

CHANNELS AND ASSOCIATED COMPONENTS

Item	Required Standard
Mast Hangers	Mast hanger bolts must be in place, no inappropriate wear in the mounting bushes.
Channels	Mast channels must not be distorted and without inappropriate wear.
Carriage and Channel Rollers	Carriage and channel rollers must be operational without inappropriate wear.
Carriage	Carriage must not be distorted and free of cracks and inappropriate wear.
Load Chains	Load chains must not exceed 2.5% wear, shall have no seized links, must not be rusty, and must be free from other defects causing failure at LOLER inspection.
Other Ancillaries	Hoses, pulleys, fittings, etc must be free from significant wear and damage.

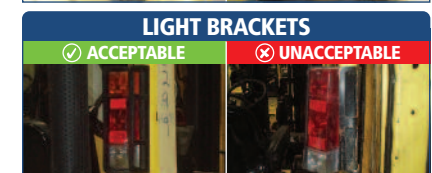
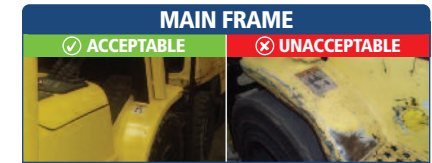
HYDRAULICS

Item	Required Standard
Cylinders	Rods and shells must be free of impact damage.
Hoses & Fittings	Must have no impact damage, cuts or splits.



FRAME AND CHASSIS

Item	Required Standard
Main Frame	There must be no impact damage to chassis and counterweight.
Overhead Guard	There must be no distortion; all welds must be intact and free from cracks.
Paintwork	Graffiti, stickers / non approved labels etc are not acceptable. Minor scrapes / scratches to paintwork are accepted.
Steering Wheel	The steering wheel must not be cut or distorted. Horn and wheel spinner must be present.
Floor Mats	Floor mats must be present and free from tears and gouges.
Bonnet / Hood	Bonnet / hood must be free of holes, cracks, splits, scratches, graffiti etc.
Seat Assembly	Seat cushions must not be split, torn, gouged or burnt. General fabric wear is acceptable. The seat back panel and owner operator's guide must be present, complete and legible. The suspension mechanism must be operational.
Seat Arms	Seat arms / hip guards must be present and undamaged. The seat belt must be operational and the belt not torn or frayed.
Side Panels	Free of impact damage, no holes, scrapes / scratches, graffiti etc.
Cab Assembly	The structure must have no distortion due to impact. No additional drilling or welding, other than that carried out by Barloworld Handling Ltd is acceptable.
Glass / Mirrors	All glass and mirrors must be present and not damaged.
Canopies	Canopies must be intact, including all roll up sides. They must be free from damage and with vision panels clear.
Dash / Column Cover	Dash / column cover must be present, secure and free from damage.
Light Brackets	Light brackets must be secure and free from damage.



WHEELS AND TYRES

Item	Required Standard
Tyre Condition	Tyres must have no splits, flat spots, uneven wear or chunks missing, (caused by wheel spin / skidding, operating over inappropriate surfaces / terrain).
Tyre Wear	Tyre wear must enable the tyre tread to be cut and at least 30mm above the wear band (where appropriate).
Wheels	Wheel centres must be complete, free from impact damage or distortion.
Wheel Nuts & Studs	All wheel nuts and studs must be present and torqued to the correct setting.

AXLES

Item	Required Standard
Axle	The axle, brake pipes, park brake cables, brake drums, hubs and wheel bearings must be free from banding materials and damage caused thereby.
Axle Mounts	Axle mounts must be intact, with no sheared bolts / studs, inappropriate clearance or damage.

FUEL

Item	Required Standard
LPG Bottle Carrier	LPG bottle carrier must not be distorted, cracked or otherwise damaged. The securing strap and clamp must be operational and undamaged. Safety decals must be present and visible. Only Flogas bottles to be returned with the machine. Sufficient fuel to operate the truck must be in the tank.
Diesels	Must have quarter of a tank of fuel and the cap must be present. Tanks must be free from contamination.
Exhaust	Exhaust tail pipe must be secure and free from impact damage.

COOLING

Item	Required Standard
Radiator	Radiators must be free from contamination, unblocked and have no impact damage. If lint screen is supplied it must be on truck when returned.
Cooling Fan	The fan must be intact and have no broken blades.



ELECTRICAL AND LIGHTS

Item	Required Standard
Lights and Brackets	All lights must be operational. Brackets must not be distorted or damaged.
Light Lenses	All lights must have all lenses present and be free from cracks or damage.
Switches / Control Levers	Cab electrics must be present and in working order (e.g. wiper motor, wiper blades, interior lights and fans). Switches and control levers must be present and fully operational with no damage.
Gauges, / Dash Displays & Interior Lights	All items must be present, in working order and free from defects (e.g. free of impact, resin, paint, dirt etc).
Batteries	Batteries, on both IC and Electric trucks must have the correct levels of electrolyte, no corrosion on cell connectors, cell tops or battery tank is acceptable. Battery plugs / cables must be free from damage, with no exposed wire or splits in the insulation. Battery plugs must connect and disconnect correctly and have no defects.

ADDITIONAL EQUIPMENT

Item	Required Standard
Chargers*	Chargers must be operational and the chassis / frame must be fully operational with no impact damage. Cables must be free from damage with no exposed wires.
Plugs	Plugs must be fully operational and not be damaged. Plug handles must be present and undamaged.
Fork Extensions / Clamps / Jibs & Hooks / Battery Fillers	Must all be available for collection at the same time, otherwise there will be an additional cost for collection.

* Please note Charger Unit must be collected at the same time as the truck. It needs to be disconnected from the mains and put with the truck when the contract hire is completed. Otherwise there will be an additional cost for collection.

LIGHTS, BRACKETS AND LENSES



TRACTION BATTERIES (OVER TOPPING)



NOTICE

Ideally all repairs should be completed at the time of first detection and not accumulated to end of contract.

It is the objective of Barloworld to keep end of contract costs to a minimum - with the equipment being kept in a suitable condition at all times.



Fair wear and tear standards for medium use

Published by: Barloworld Handling Limited
Maidenhead Office Park, Maidenhead, Berkshire SL6 3QN
Telephone: 01628 822151 Facsimile: 01628 826866
info@handling.barloworld.co.uk www.barloworld.co.uk